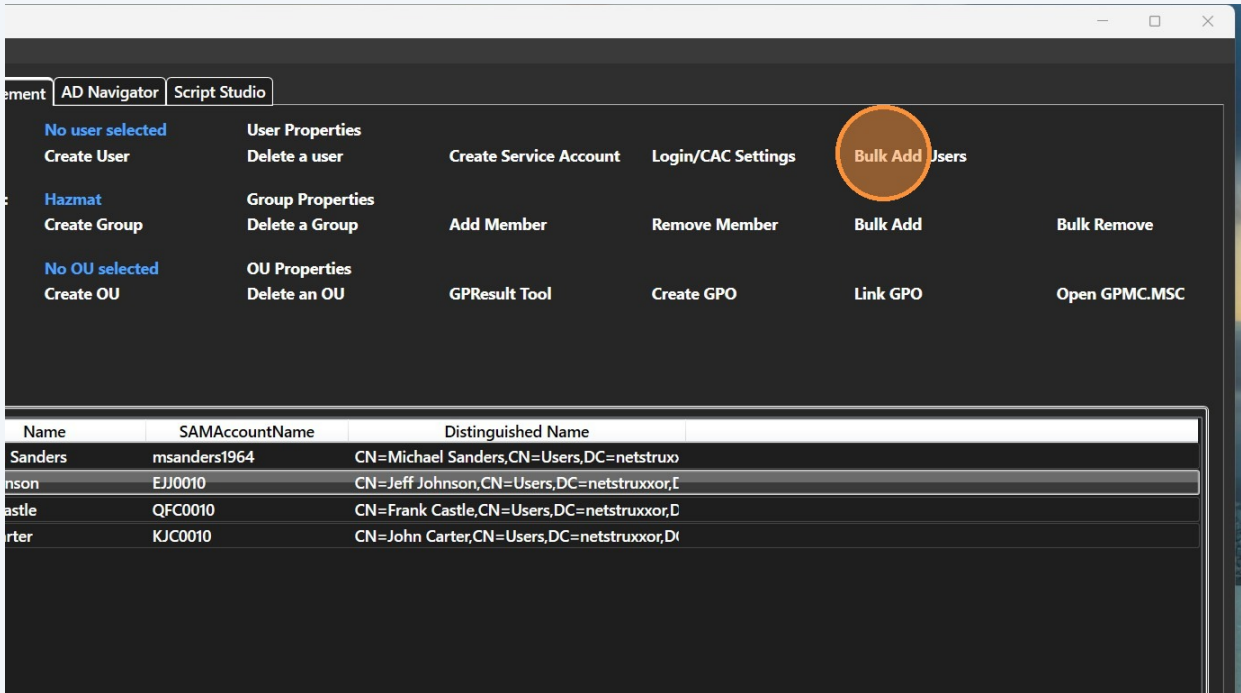


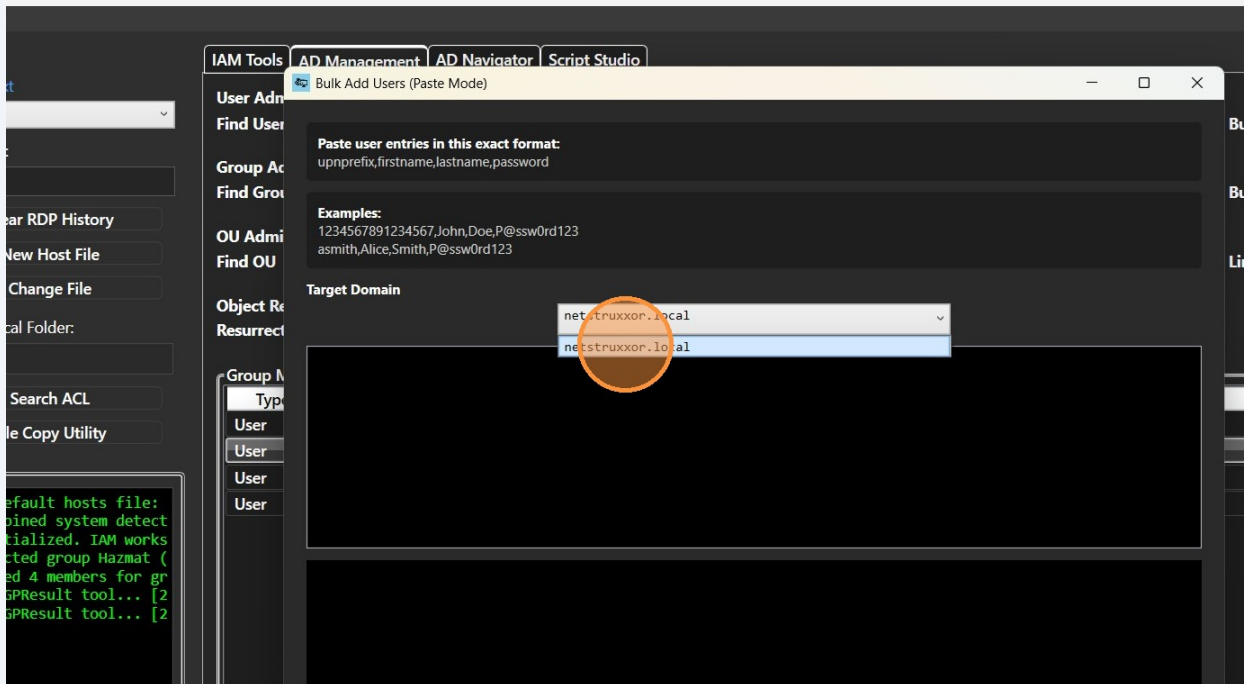
How to Bulk Add Active Directory Users with the AD Management Tab

Learn how to efficiently add multiple users to your system by pasting data directly into the platform. This guide explains the process from inputting user details to performing a dry run to ensure accuracy before final submission.

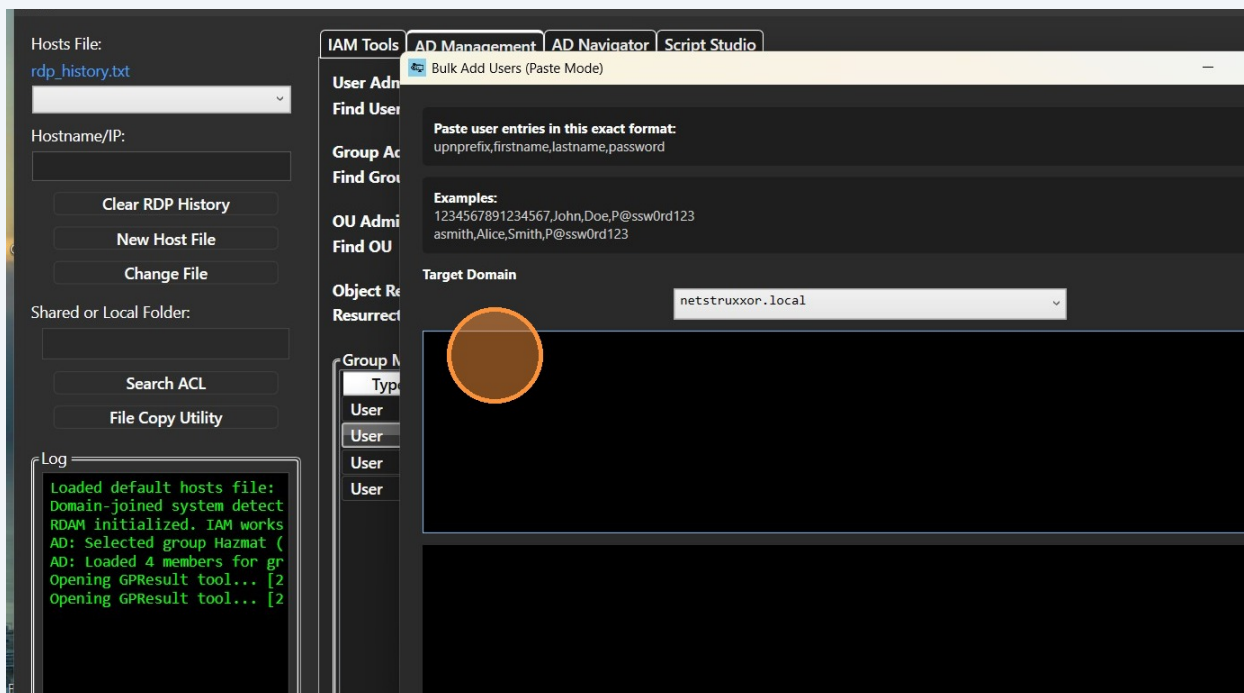
1 Click "Bulk Add Users"

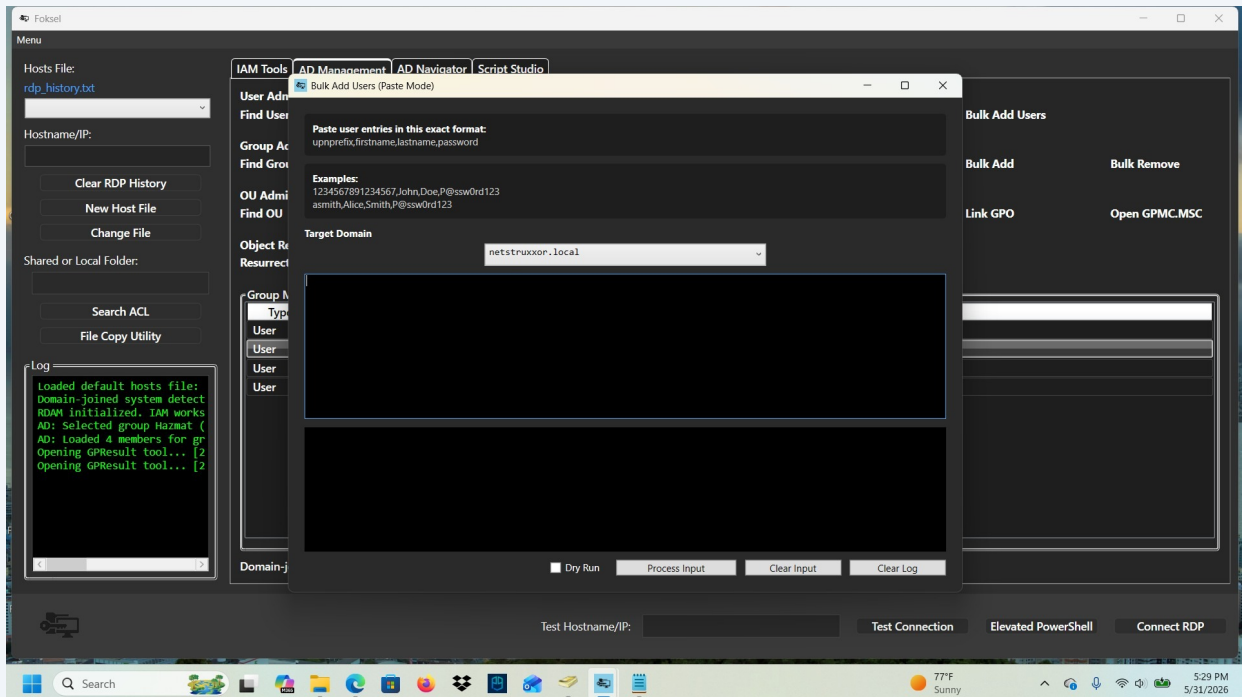


2 Select the "target domain" from the Target Domain dropdown

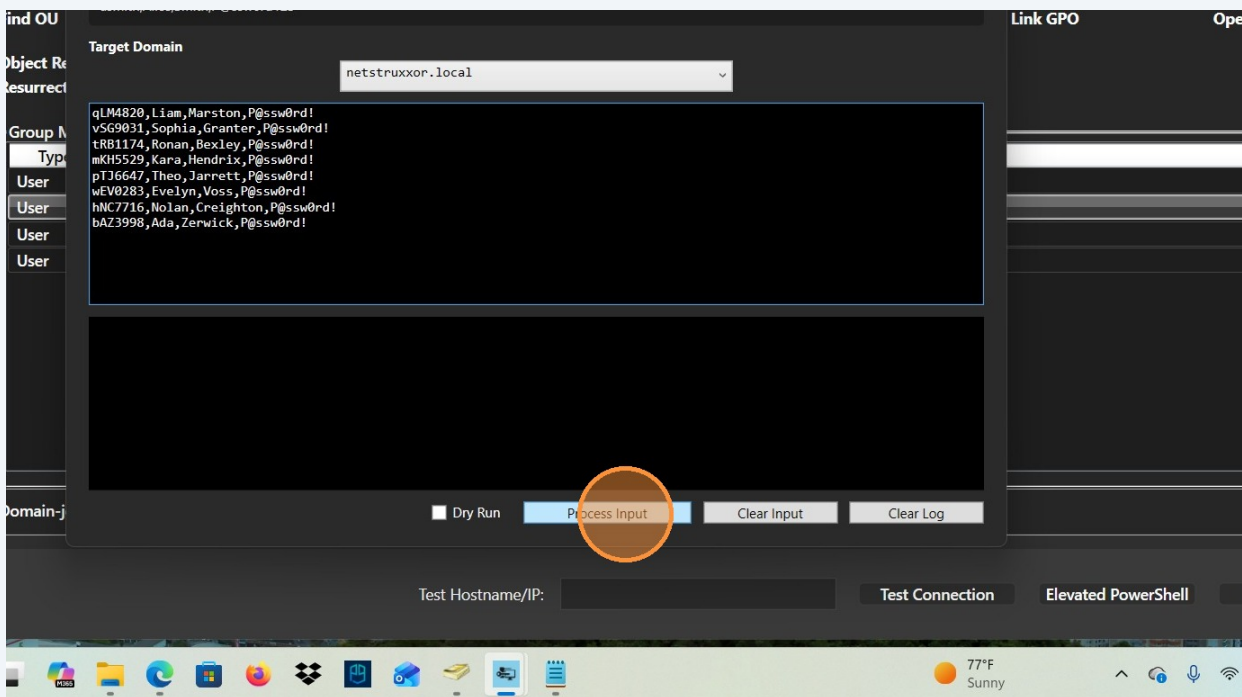


3 Paste the formatted user entries into the input field





4 Click "Process Input" to begin the bulk user creation



5

Check the "Dry Run" box before Process Input to test for accuracy

