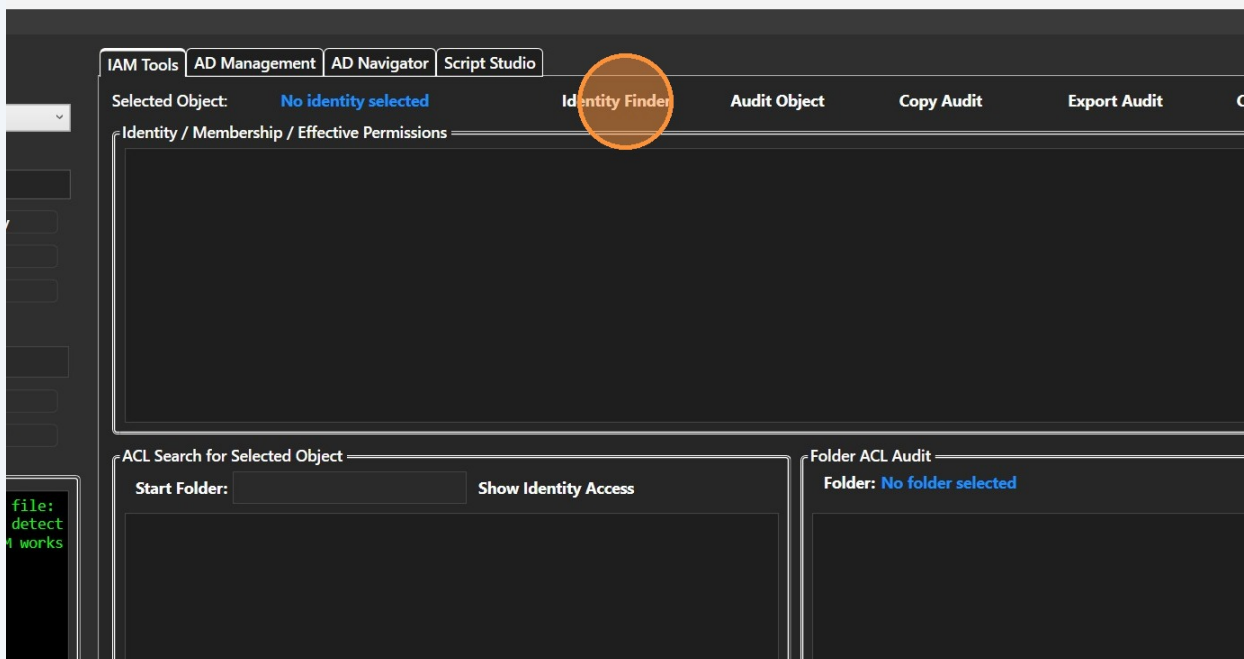


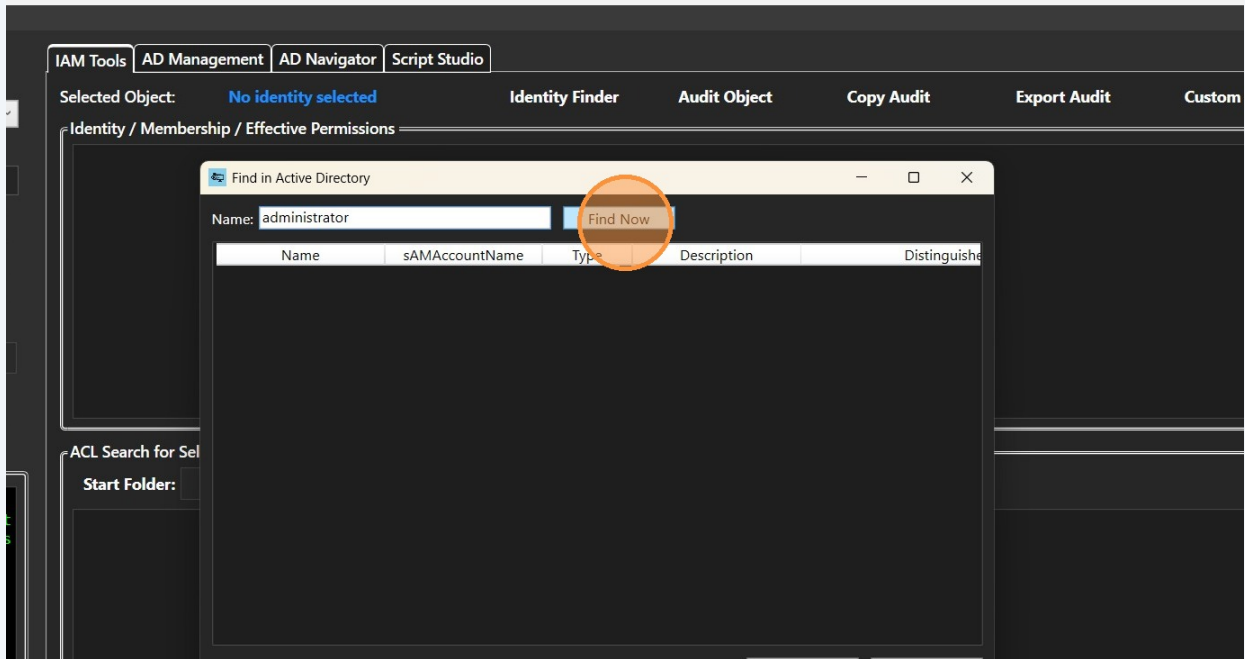
# How to Audit Active Directory Identity Access Permissions

Learn how to quickly locate specific user identities and audit their access levels within Active Directory. This guide provides a straightforward workflow to help you verify permissions and maintain security across your folders.

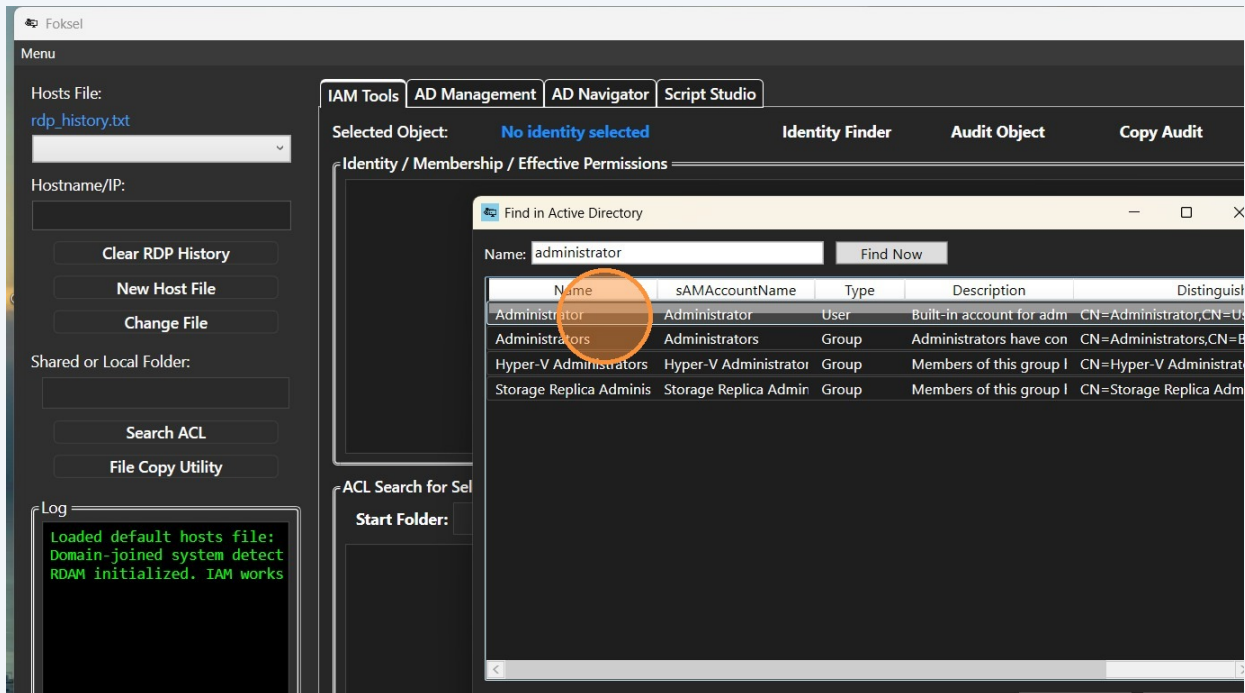
1 Click "Identity Finder"

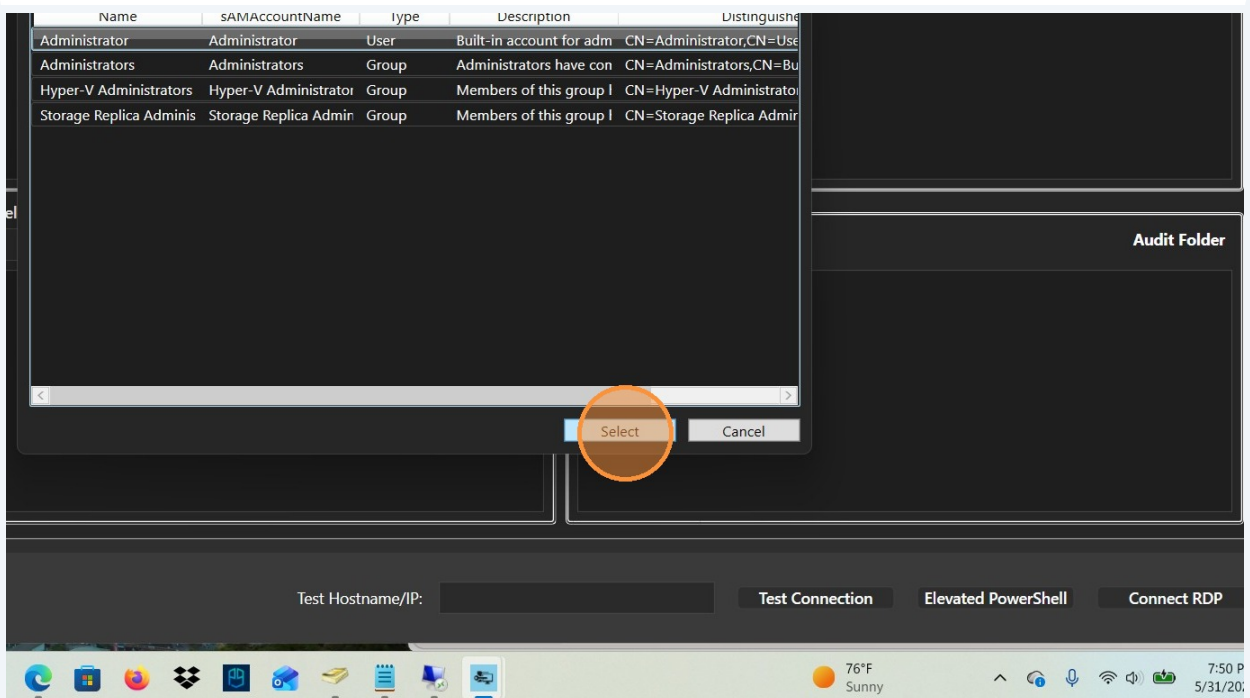


2 Type the "Identity" details into the Name field and click "Find Now"



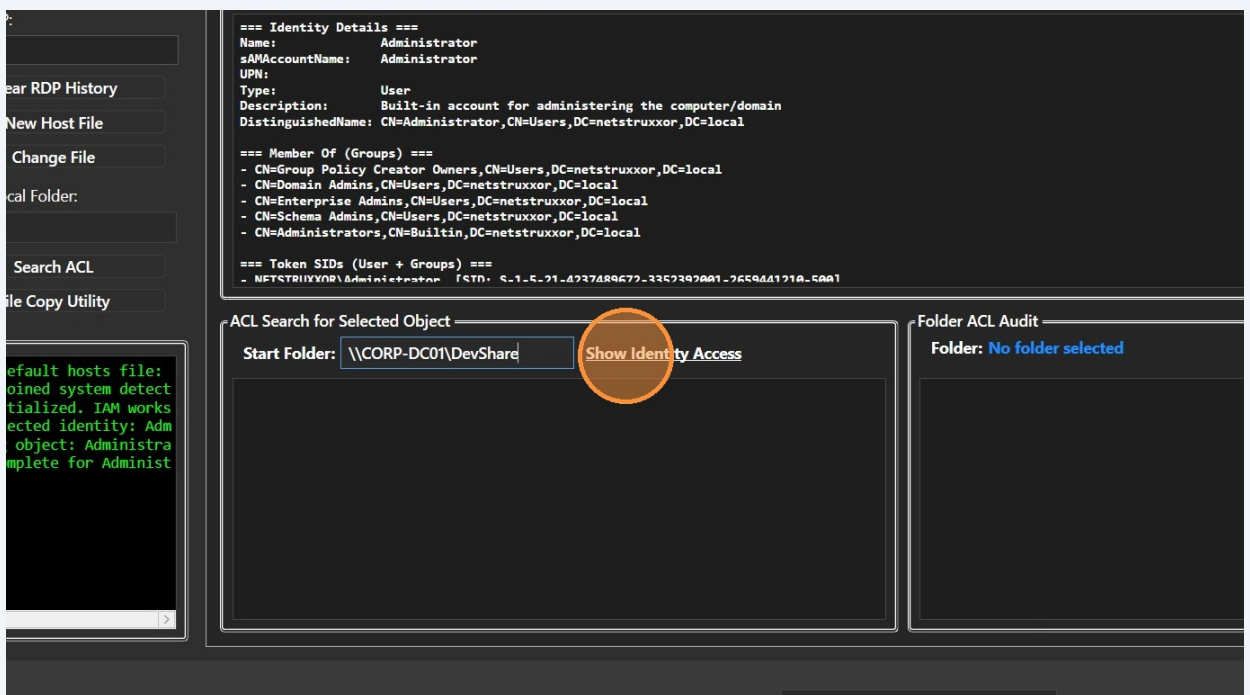
3 Click the 'Identity' from the search results and click 'Select'



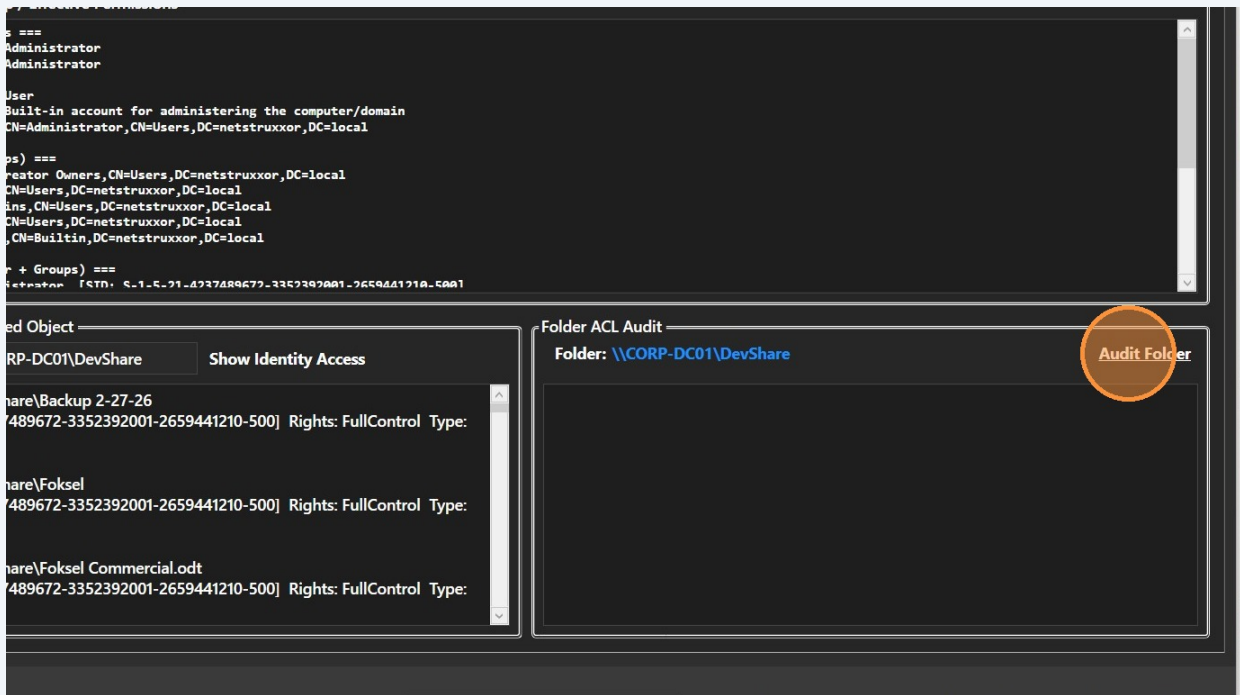


4

Enter a network path to a shared folder for the Start Folder field and click "Show Identity Access"



## 5 Click "Audit Folder" to start the permission audit



## 6 Review all Access Control Entry Points.

