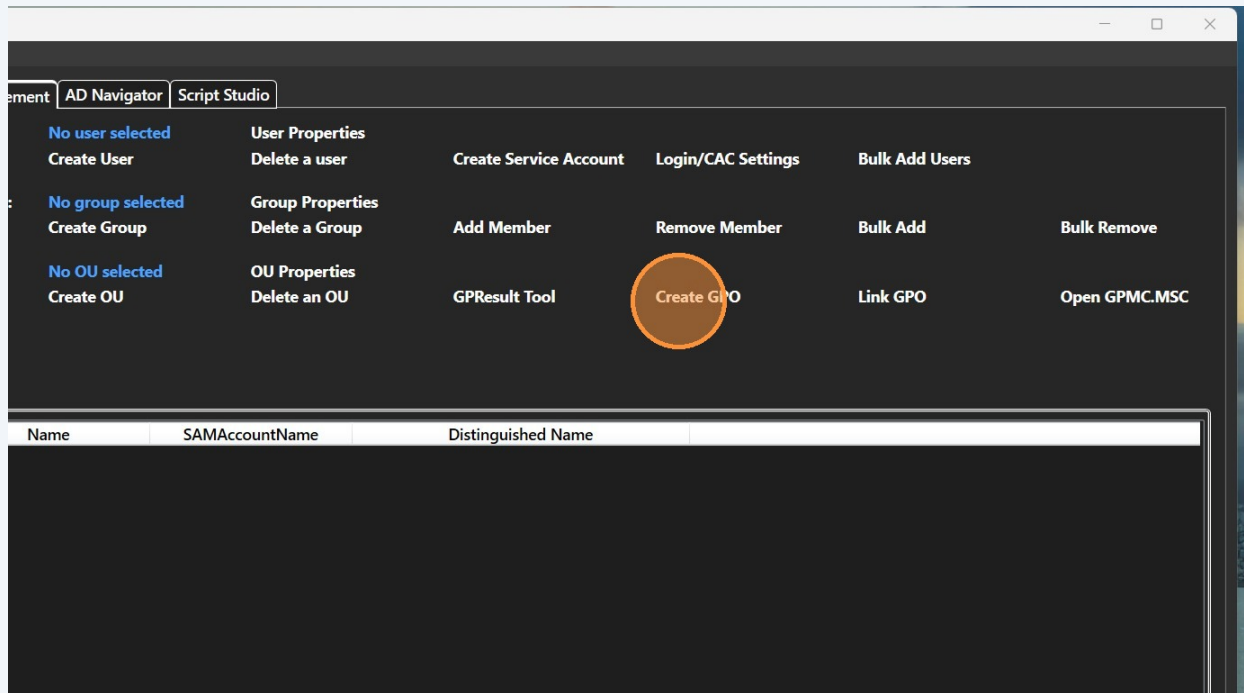


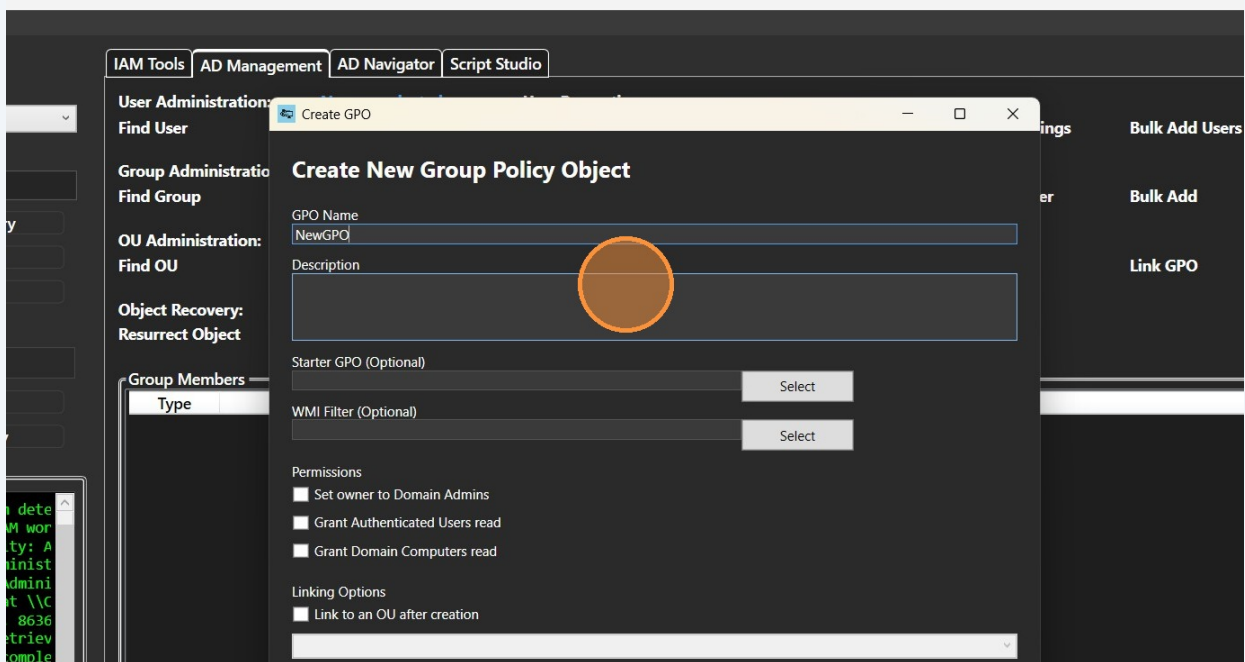
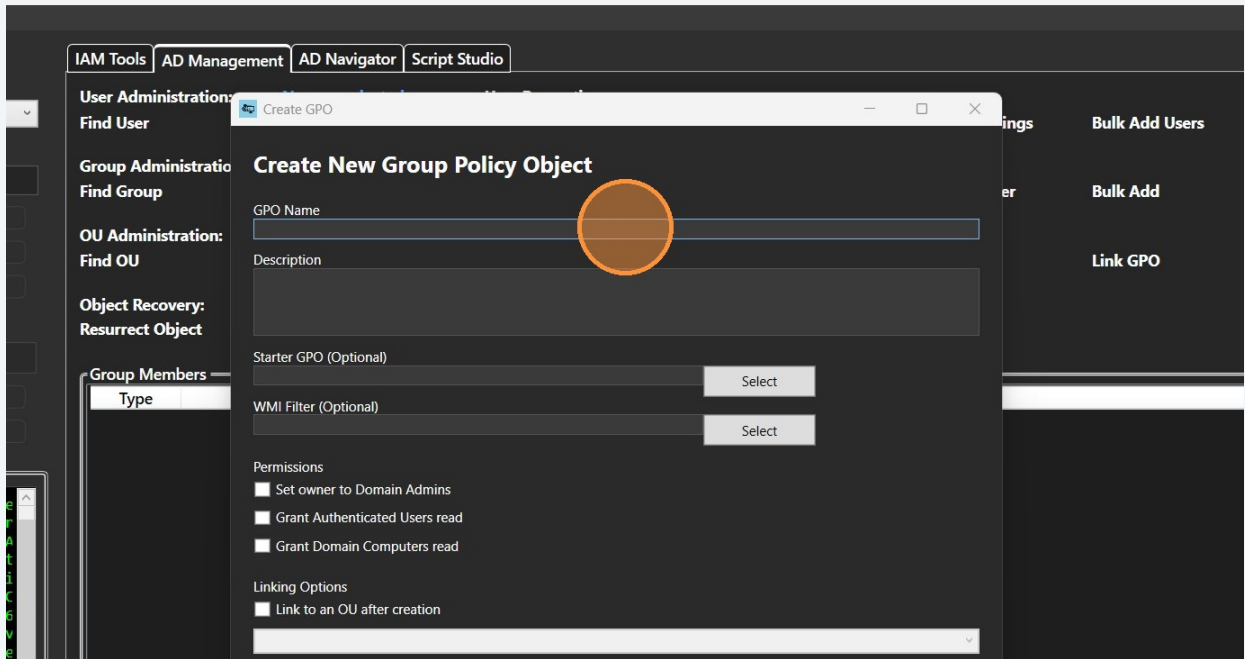
How To Create And Link A Group Policy Object

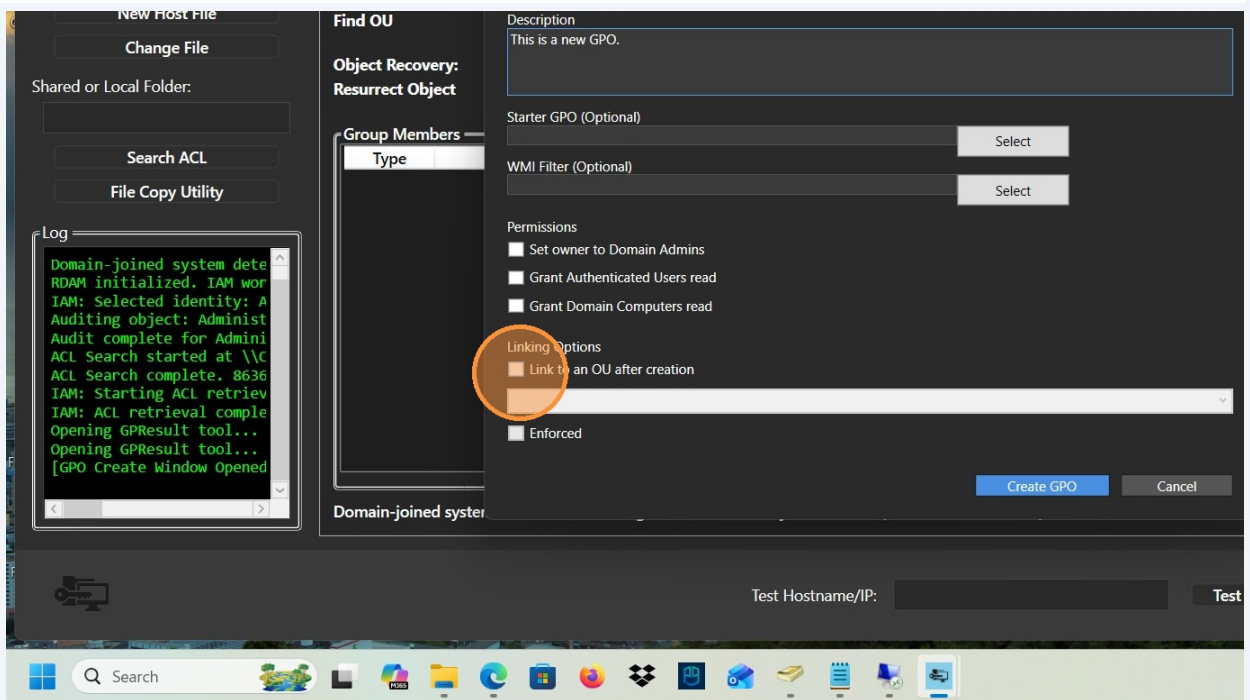
Learn how to efficiently generate a new Group Policy Object and apply it to a specific Organizational Unit within your network infrastructure. This guide simplifies the process to ensure your directory policies are correctly implemented and linked.

- 1 Click "Create GPO" in the AD Management tab

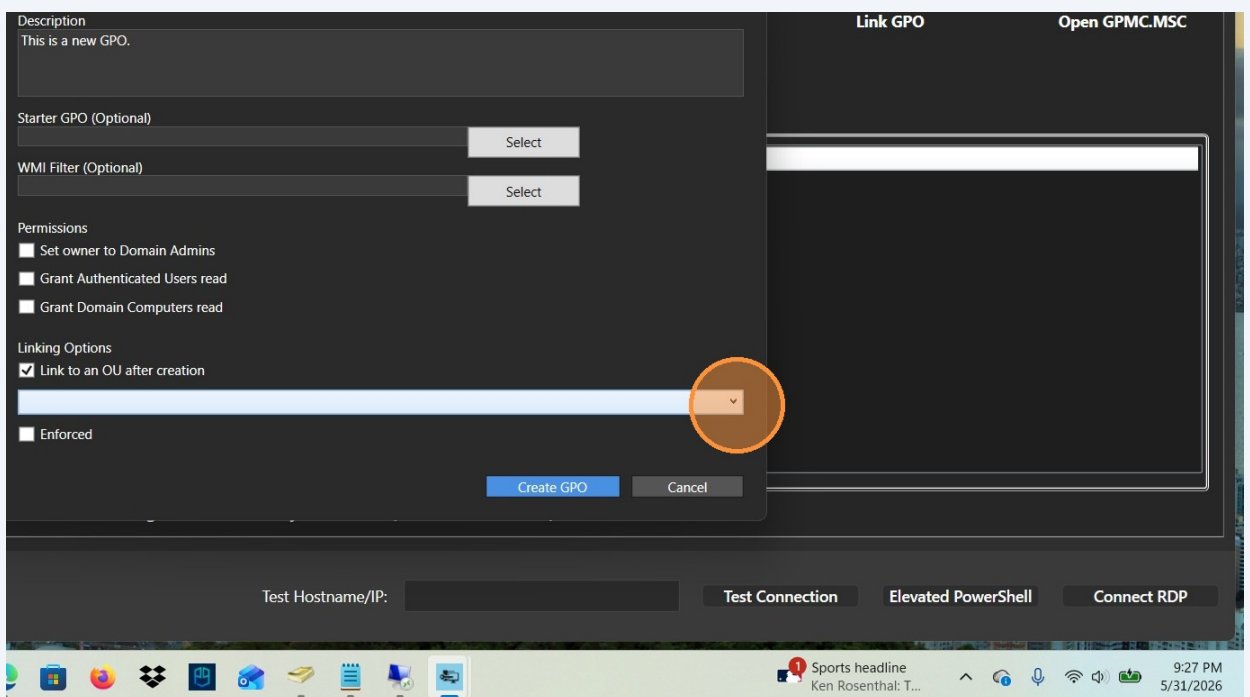


- 2 Enter the GPO Name and Description

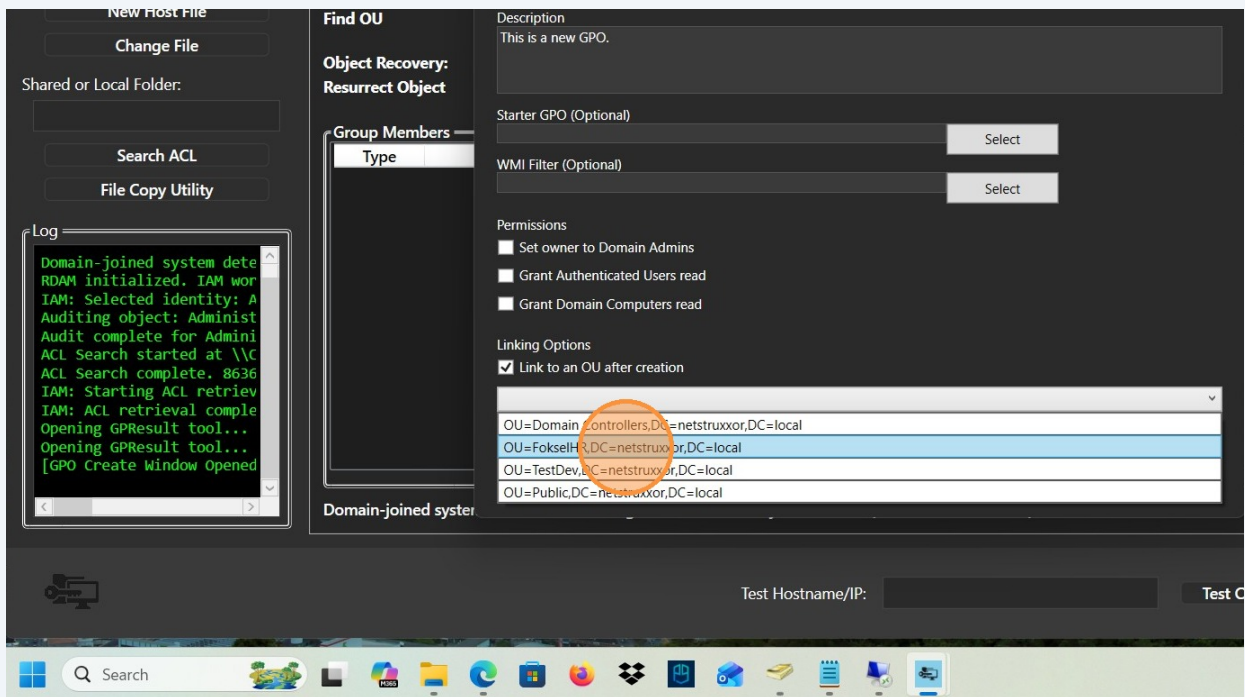




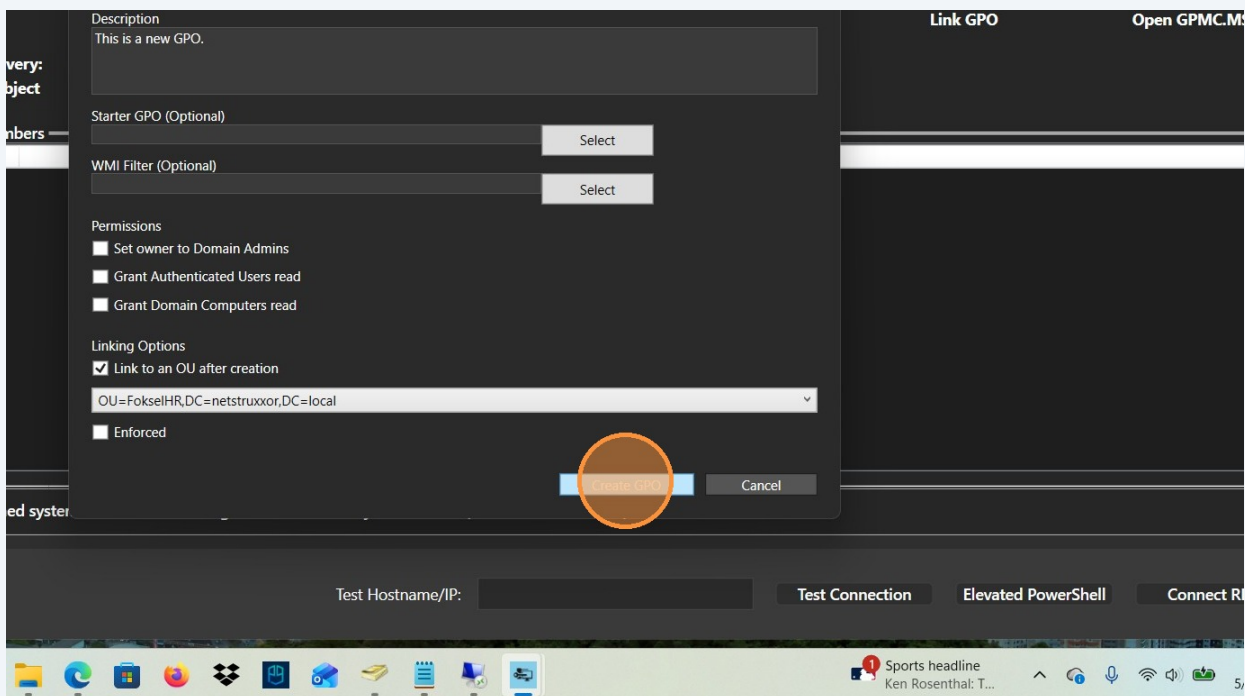
3 Check "Link to an OU after creation"



4 Select the target OU from the dropdown menu



5 Click "Create GPO" to finalize the object



6 Click "OK" to dismiss the success notification

