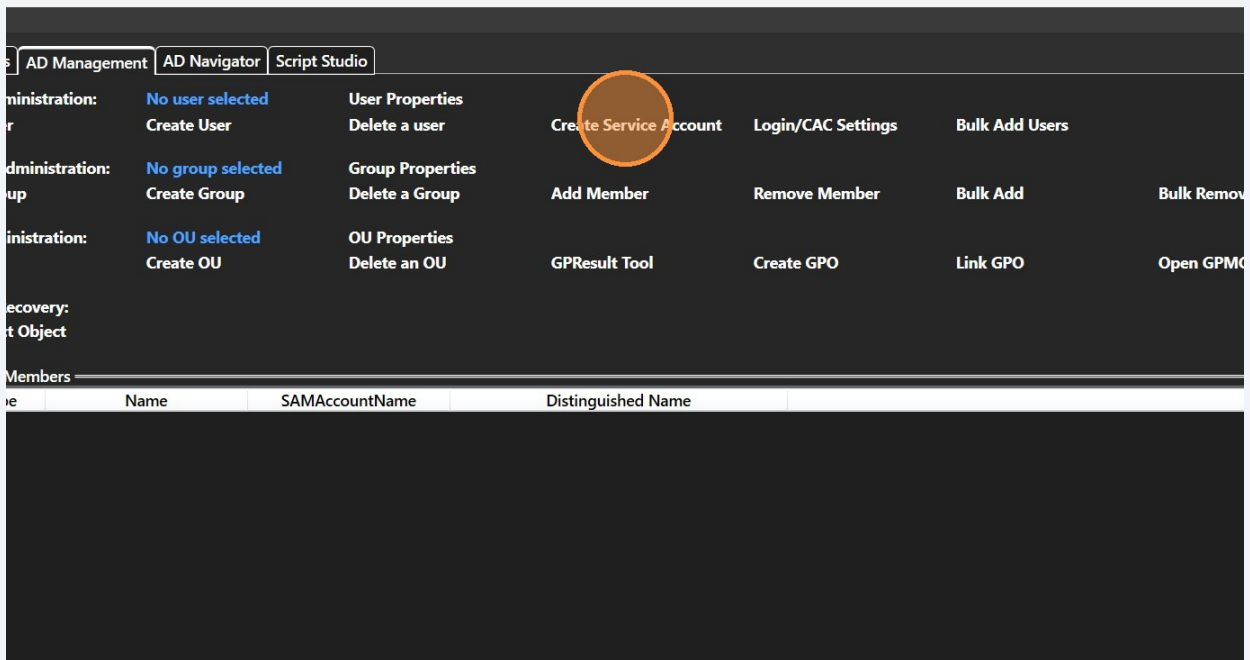


How To Create A Managed Service Account

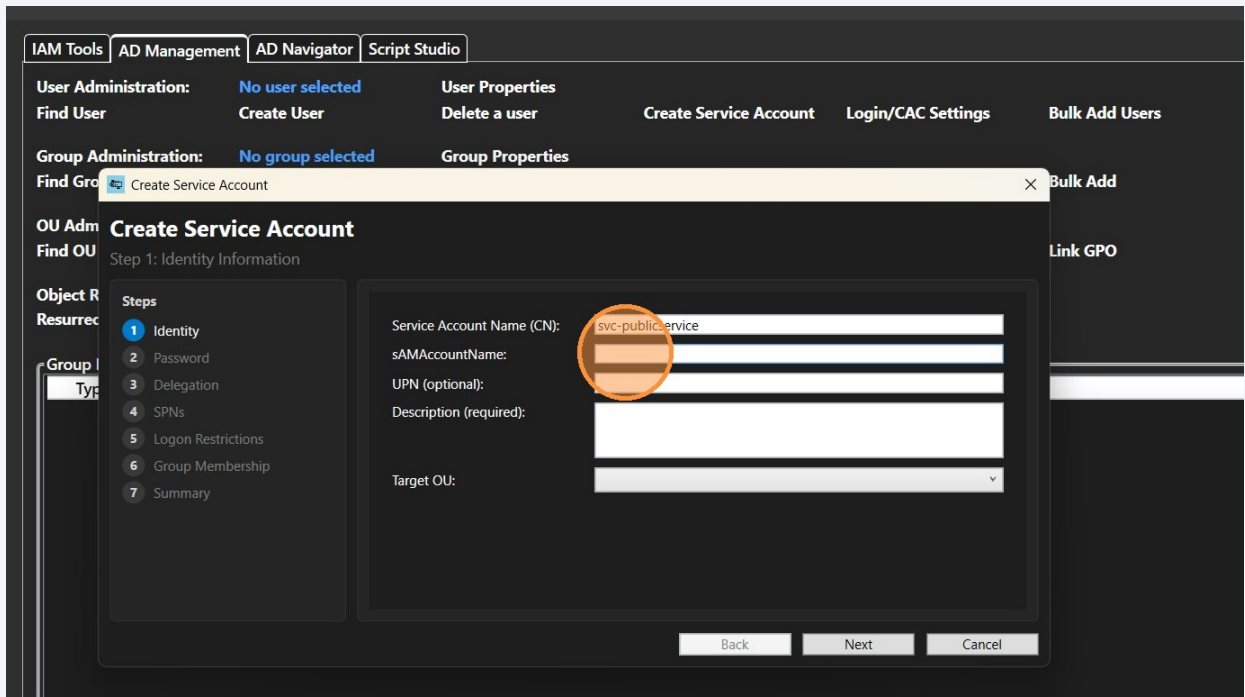
This guide provides a walkthrough for setting up a new managed service account within your domain environment. Follow these instructions to properly configure the account properties and security settings to ensure successful deployment.

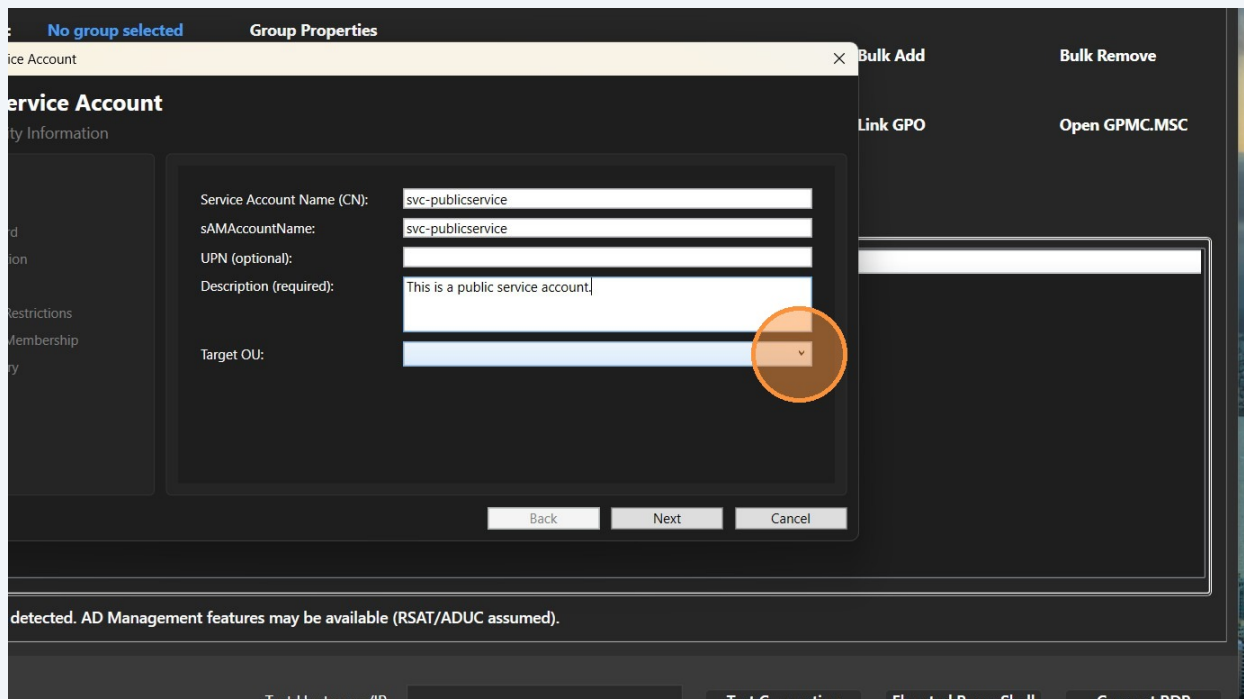
Account Identity Details

- 1 Click "Create Service Account" from the AD Management tab.

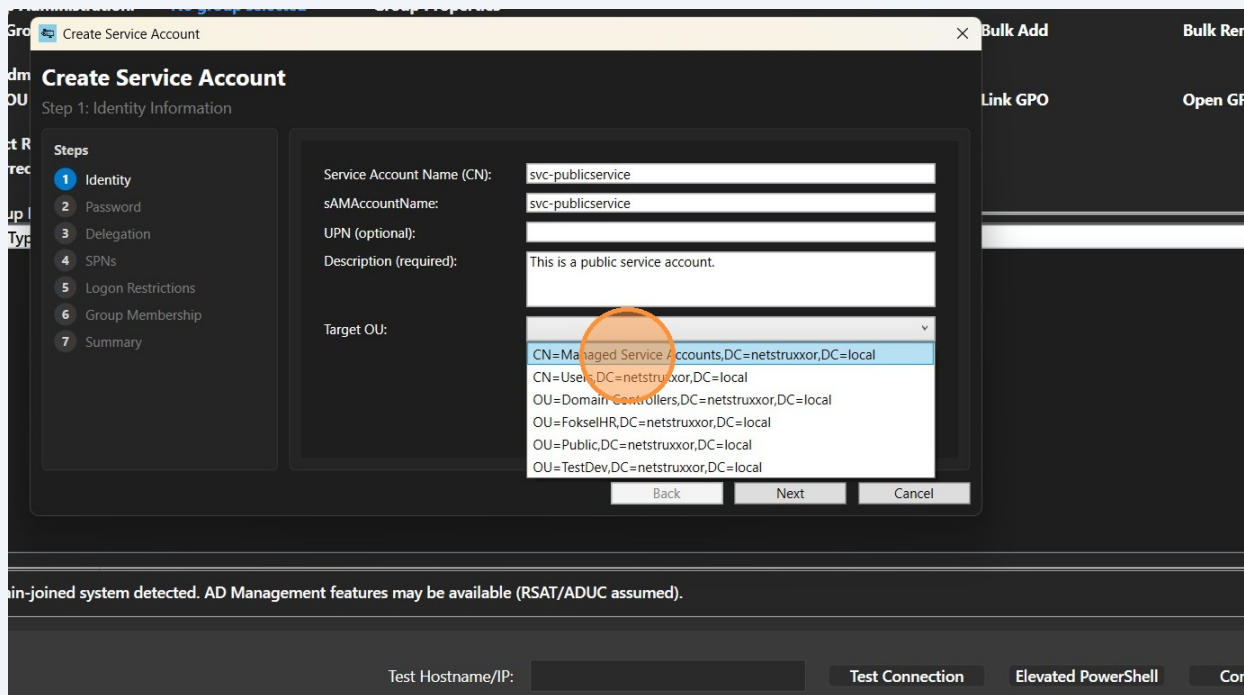


- 2 Enter the Service Account Name, sAMAccountName, and Description.

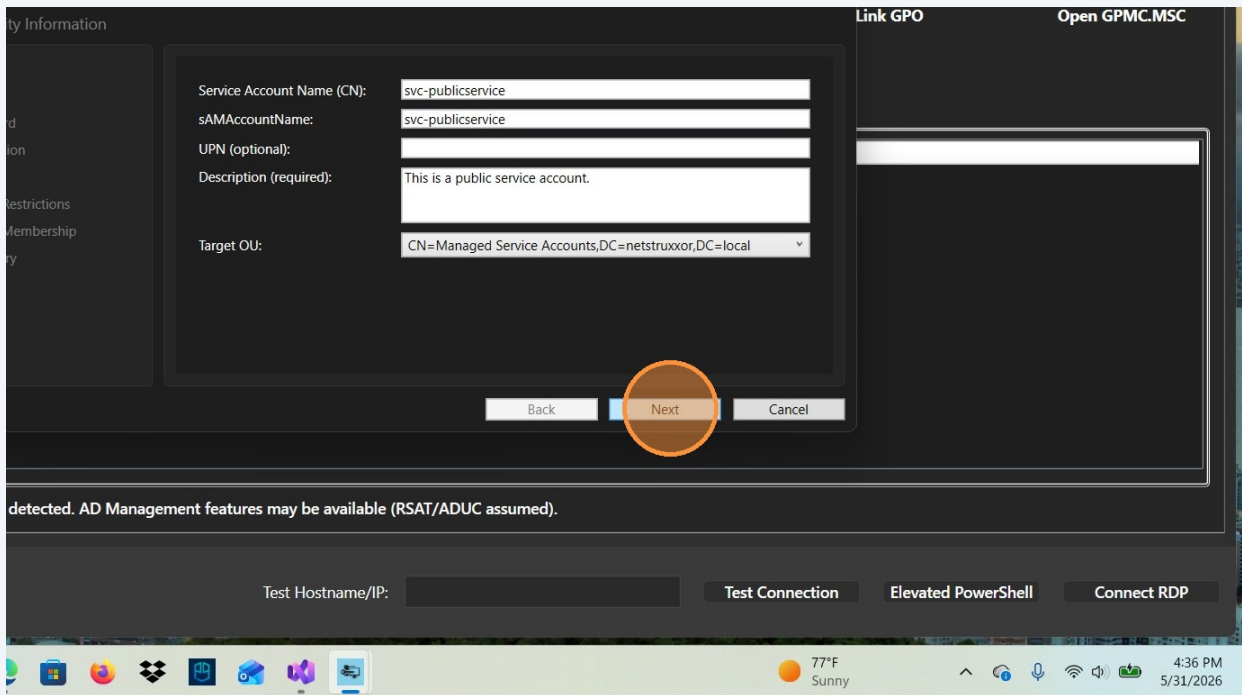




3 Select the Target OU from the dropdown menu.

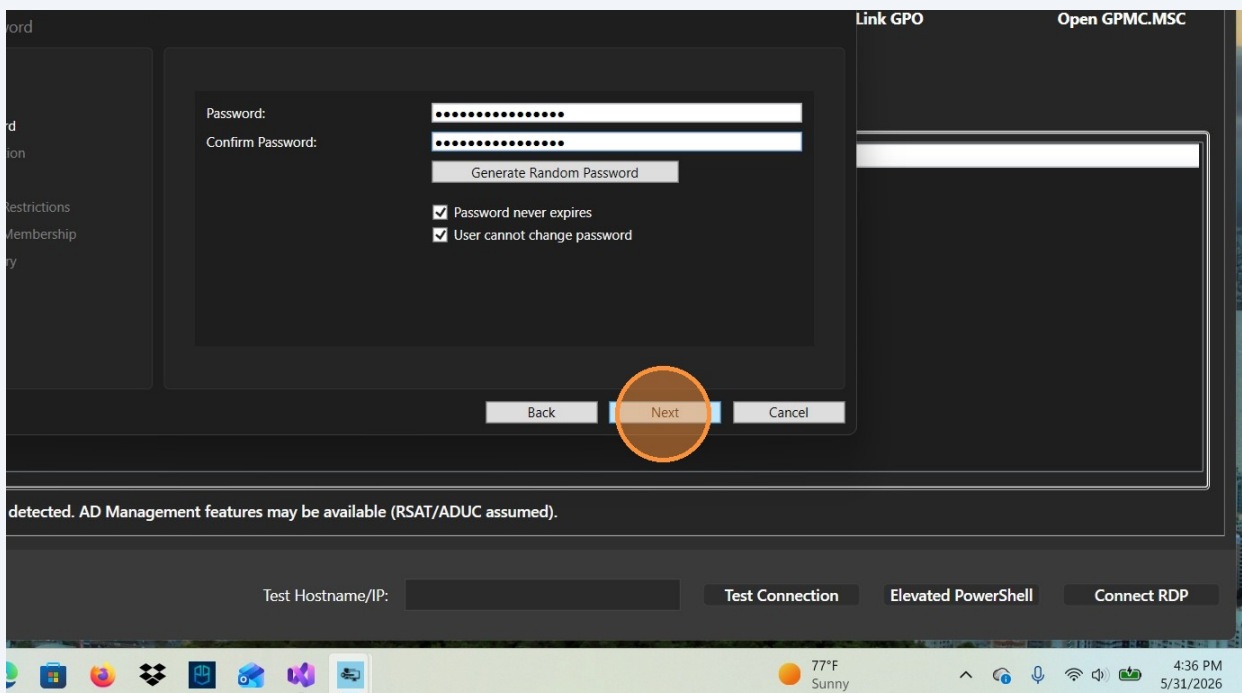


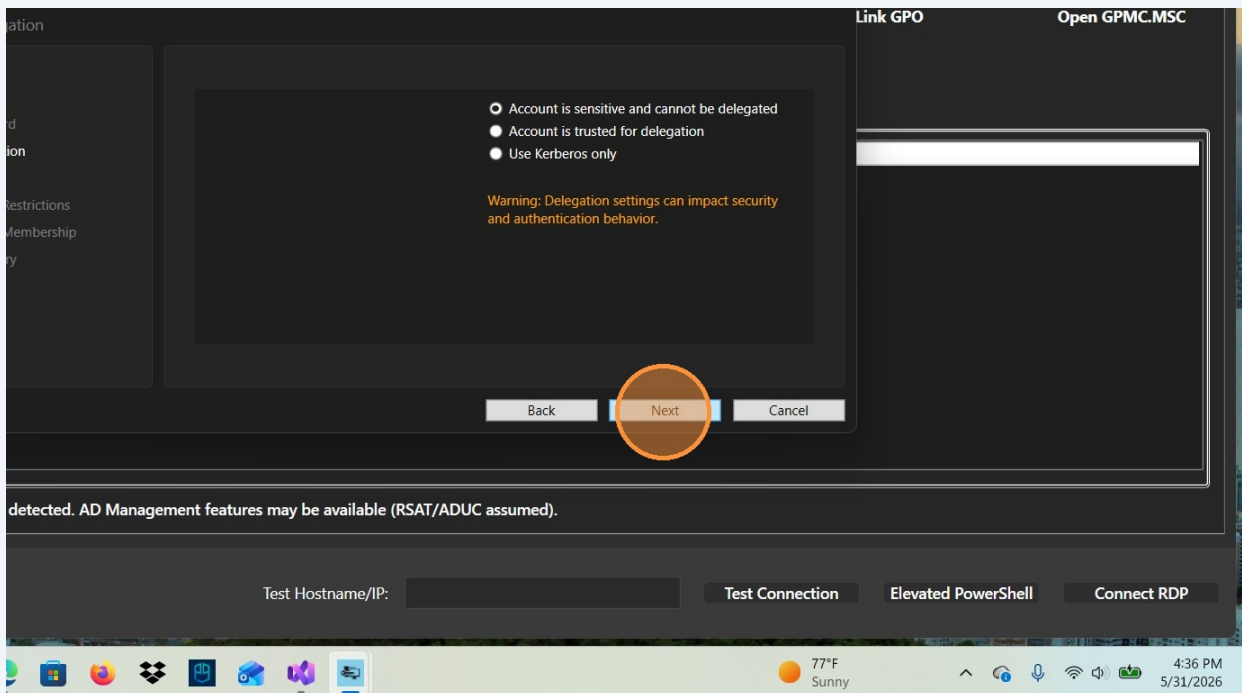
4 Click "Next"



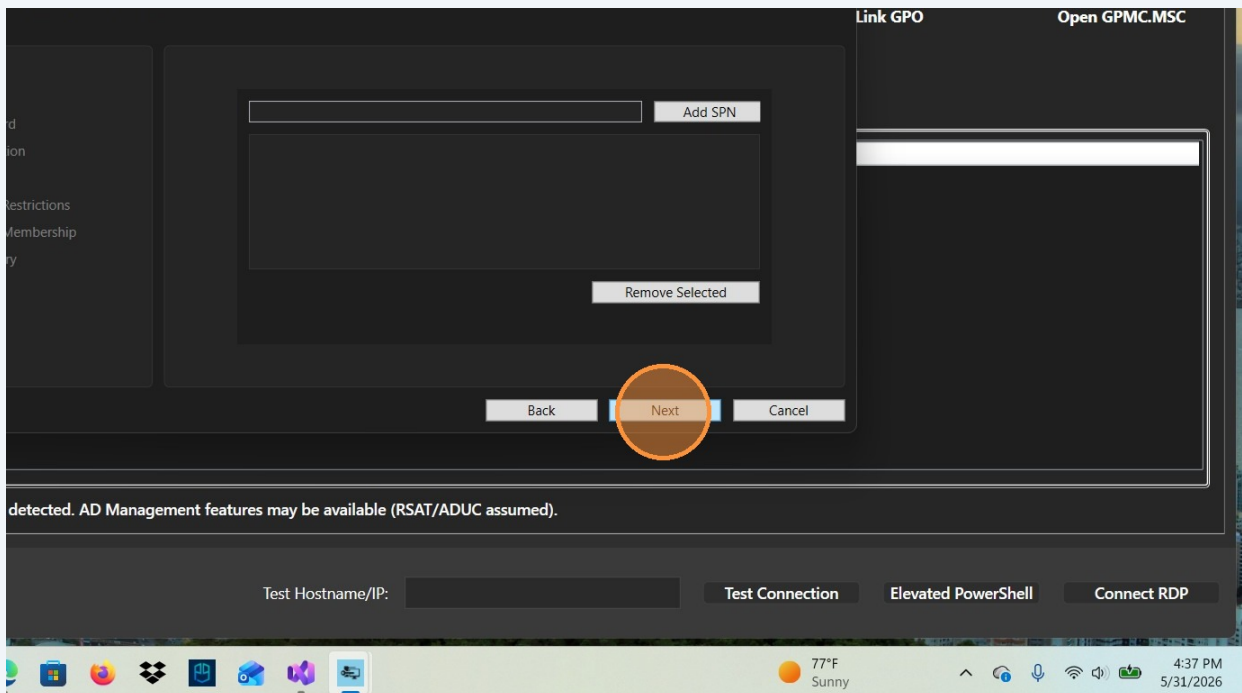
Security and Permissions

5 Configure the account password and click "Next".

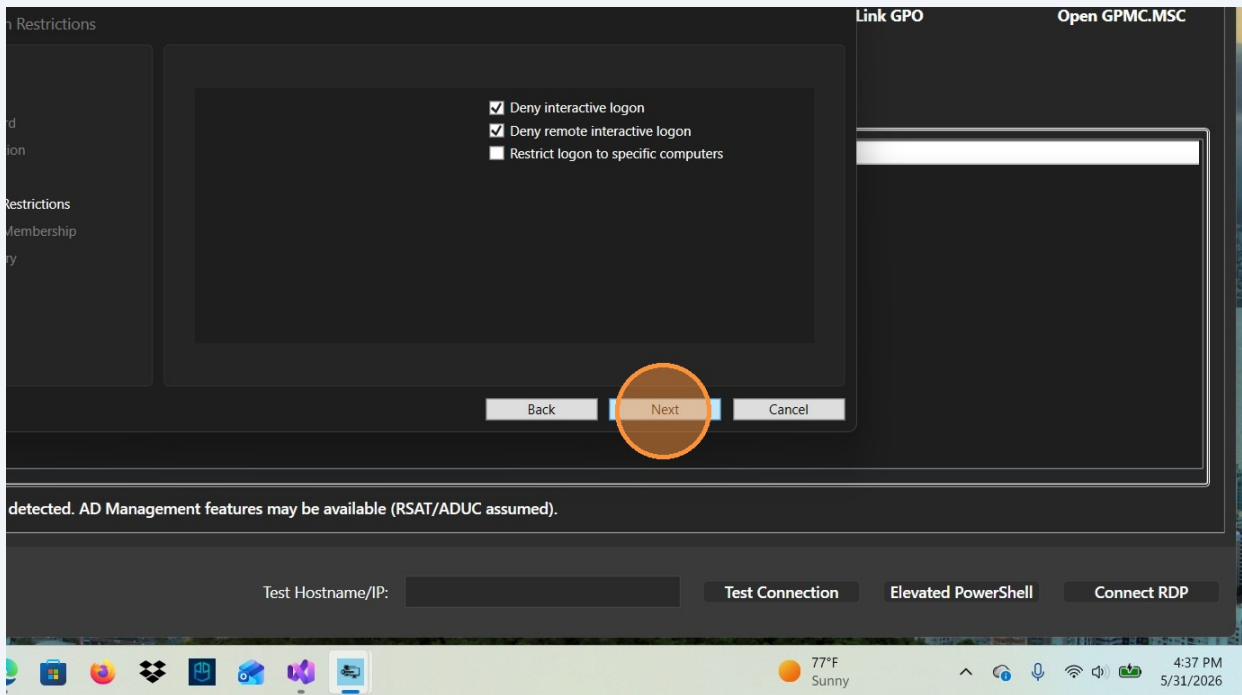




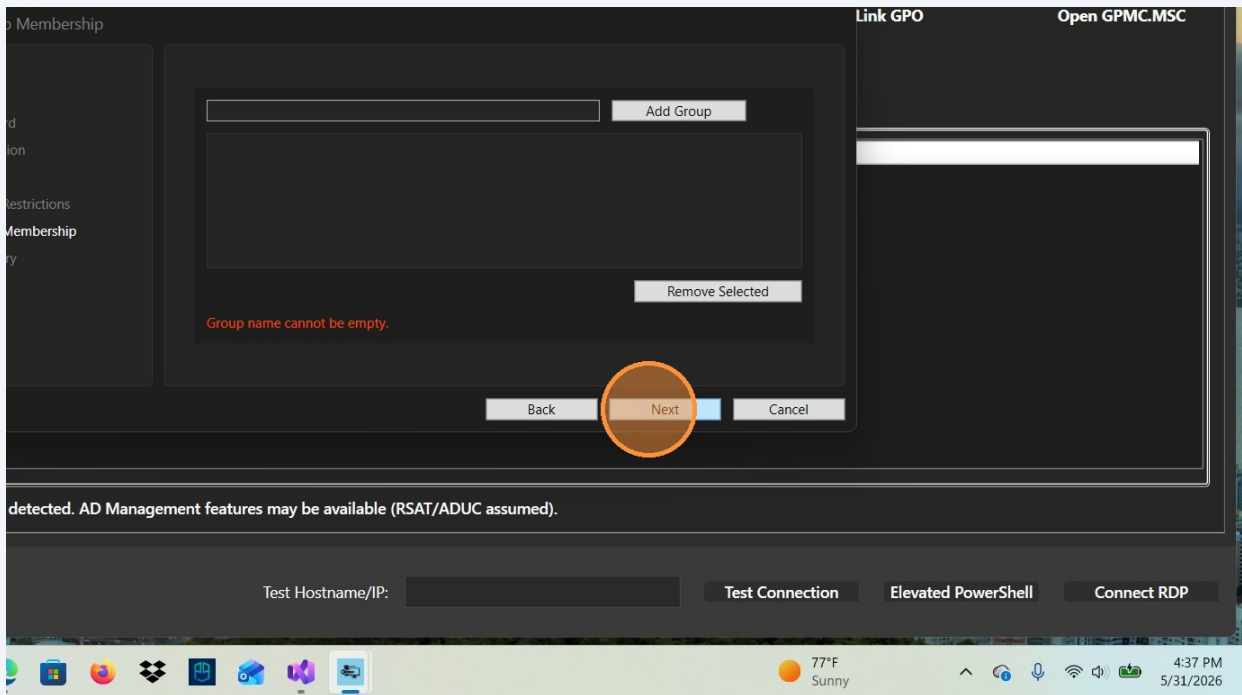
6 Review delegation settings and click "Next".



7 Review SPN settings and click "Next".



8 If the service account needs added to a group provide the group name and click add group otherwise, click "Next."



Review and Completion

9

Review the summary and click "Finish" to create the account. NOTE: Network permissions may restrict recording the event in the Security Log but the account will still be created unless prevented by Group Policy.

